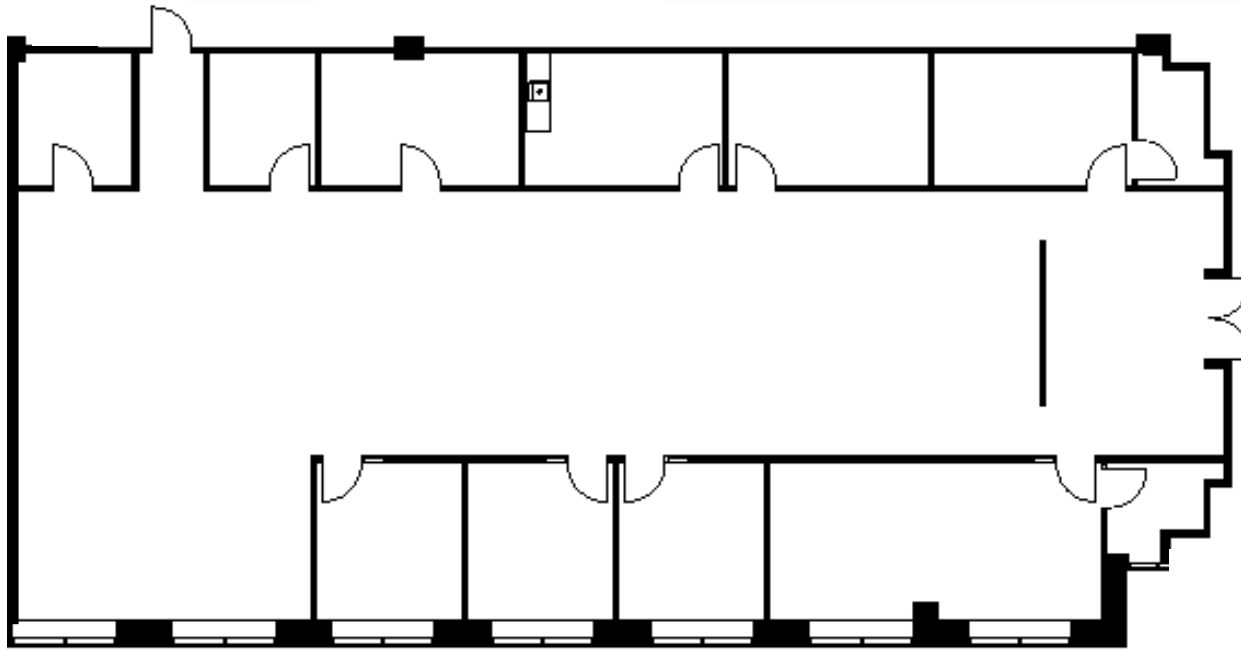


# BUILDING 1300



**Suite 115** | 4,659 RSF



**FULL FLOOR**



[www.flaglerstationoffices.com](http://www.flaglerstationoffices.com)

**BRIDGE INVESTMENT GROUP**

**Eric Groffman**  
Executive Vice President  
+1 305 728 7396  
[eric.groffman@am.jll.com](mailto:eric.groffman@am.jll.com)

**Cameron Tallon**  
Senior Vice President  
+1 305 960 8407  
[cameron.tallon@am.jll.com](mailto:cameron.tallon@am.jll.com)

**Edward Quinon**  
Vice President  
+1 305 302 6200  
[edward.quinon@am.jll.com](mailto:edward.quinon@am.jll.com)

**Emily Lehman**  
Associate  
+1 305 960 8446  
[emily.lehman@am.jll.com](mailto:emily.lehman@am.jll.com)

